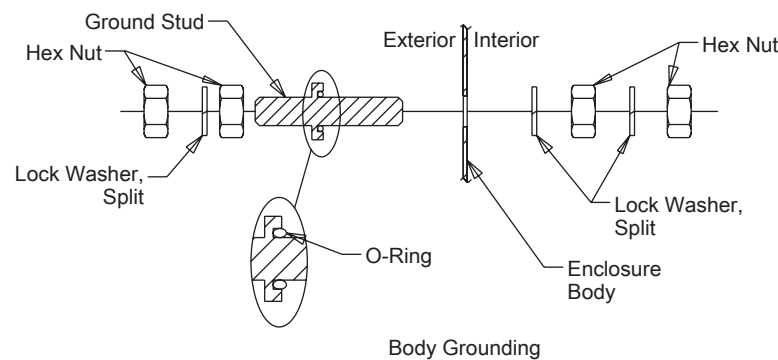
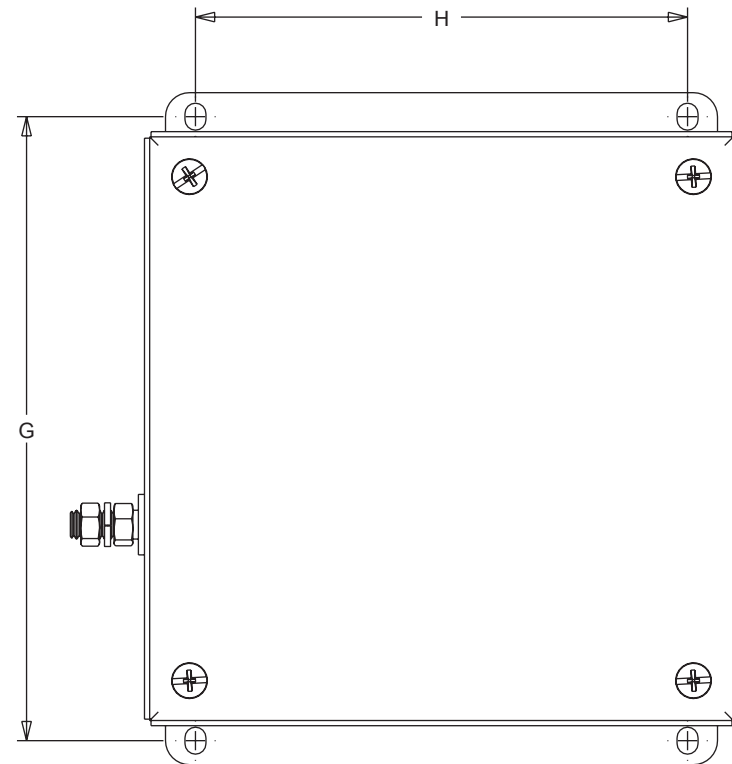
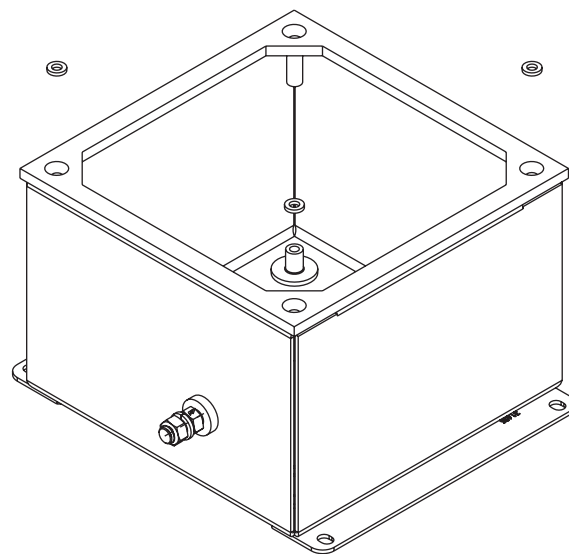
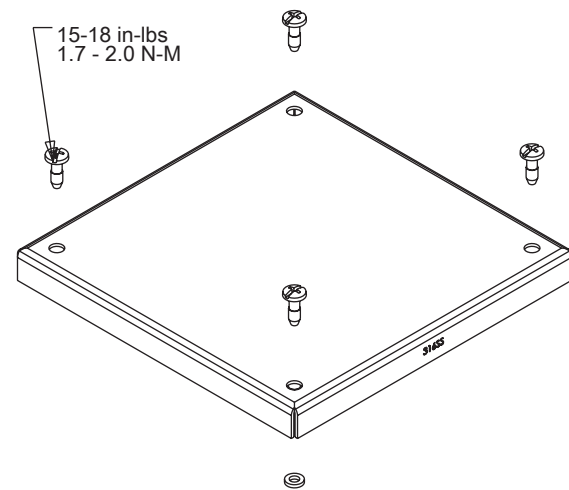
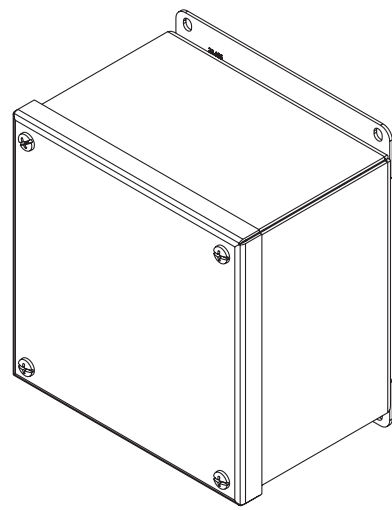


ZONEX™



Catalog Number	Mounting Dimensions			
	G (in.)	G (mm)	H (in.)	H (mm)
EXE443SS6	3.12	79.2	3.81	96.8
EXE664SS6	5.12	130.0	6.81	173.0
EXE774SS6	6.12	155.4	6.81	173.0
EXE965SS6	5.12	130.0	8.81	223.8
EXE10105SS6	9.12	231.6	9.81	249.2

NOTES:

- Industry Standards:**
ATEX Directive 94/9/EC
ATEX
 Sira 09ATEX3224U
 Ex e IIC Gb
 Ex tb IIIC Db IP 66
 EN 60079-0:2009
 EN 60079-7:2007
 EN 61241-0:2006
 EN 61241-1:2004

- IECEX**
 IECEX SIR 09.0099U
 Ex e IIC Gb
 Ex tb IIIC Db IP 66
 IEC 60079-0:2007-2010
 IEC 60079-7:2006-2007
 IEC 61241-0:2004
 IEC 61241-1:2004
 TestSafe ANZEx 12.3011U

UL 508A Listed; Type 4, 4X, 12; File No. E61997
 cUL C22.2 No. 94 Listed; Type 4, 4X, 12; File No. E61997
 NEMA/EEMAC Type 4, 4X, 12
 IEC 60529, IP66

Service temperature in ATEX and IECEX for standard polyurethane gasket is -40C to 70C.

- Visually inspect gaskets, locks and screws after each opening of covers or removing of gland plates.
- Internal body grounding terminal shall be used for the equipment grounding connection and the external is for supplementary bonding connection where local codes or authorities permit or require such connection.
- Earth grounding must be connected by lug on end of the cable. (A UL listed ring connector is required for Class I, Zone 1 applications).
- The number and arrangement of terminal blocks or other wiring terminals is to be determined in the end-use investigation.
- Enclosure openings must be filled by equipment marked with the same certification as the enclosure.

General Guide to Cable Entry Positions into Cable Gland or Enclosure Side:

- Maximum hole diameter is major thread diameter of cable gland plus 0.7mm (.03")
- Minimum material to be maintained between holes:
 Glands M16 through M32: 15mm (0.59")
 Glands M35 through M75: 20mm (0.79")
 Glands M75 through M100: 35mm (1.38")

Prior to making holes in the enclosure wall or gland plate, verify that the selected gland will not have interference with the sealing washer and lock nut.

- Hole location must be located so sealing washer and locknut do not interfere with gasket.
- Select a gland for the correct application with the proper certifications. Make certain all cable gland accessories are included for through hole installation. Additional accessories may include locknut and sealing washers.
- Install the gland in accordance to the manufacturers instructions.

- Painted Enclosures require these additional instructions:
 For fixed installations minimize the risk of electrostatic discharge of painted enclosures.
 - Remove the explosive atmosphere prior to contact or cleaning
 - Make certain enclosure is grounded and external enclosure ground connection is made; all conducting parts should be properly bonded.
 - For painted surfaces, avoid friction with surface, only clean with wet cloth moistened with de-ionized water.
 - Avoid contact in low relative humidity environments. Increase environment humidity where possible.